

Pressure Switch Connector

The pressure switch connector (Part No. 309.013.036) connects the pilot hose to the discharge pressure switch (Part No. 437900).

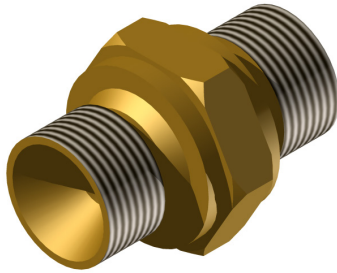


Figure 28 - Male Pilot Hose Connector (Part No. 309.013.036)

Technical Information

Material:	Steel 230 M07 Pb Zinc Passivated
Connection:	3/8 in. NPT x 1/4 in. BSPP
Max. Working Pressure:	350 bar (5076 psi)
Overall Size:	34mm (L) x 19mm (W) (1.35 in. (L) x 0.75 in. (W))
Weight:	0.034 kg (0.08 lb)

Male Tee

This is used primarily in manifold systems for connecting pilot lines from one slave container to the next when using the pneumatic actuator (Part No. 304.209.004).

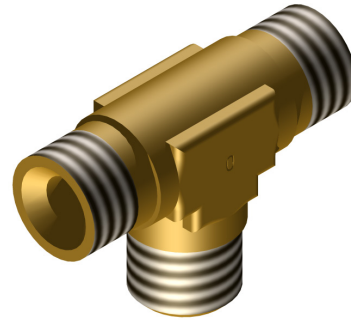


Figure 29 - Male Tee (Part No. 309.200.021)

Technical Information

Material:	Steel 230 M07 Pb Zinc Passivated
Connection:	1/4 in. BSPP x 1/4 in. BSPP x 1/4 in. NPT
Max. Working Pressure:	450 bar (6527 psi)
Overall Size:	42mm (L) x 29mm (W) (1.65 in. (L) x 1.14 in. (W))
Weight:	0.075 kg (0.17 lb)