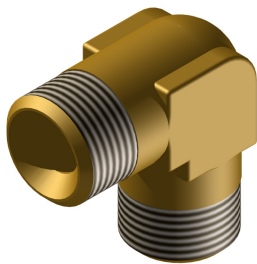


SECTION 2 - SYSTEM COMPONENTS

Male Elbow

This elbow can be used on the last slave container when the pressure switch connection is taken from the manifold or piping networks.



025109

Figure 31 - Male Elbow (Part No. 309.013.009)

Technical Information

Material:	Steel 230 M07 Pb Zinc Passivated
Connection:	1/4 in. BSPP x 1/4 in. NPT
Max. Working Pressure:	450 bar (6527 psi)
Overall Size:	28mm (L) x 25mm (W) (1.10 in. (L) x 1.00 in. (W))
Weight:	0.050 kg (0.11 lb)