

SECTION 2 - SYSTEM COMPONENTS

Manual Actuator

The manual actuator is used to mechanically operate the system at the container position and is fitted to the top of the valve assembly or removable electrical actuator. Inadvertent operation is prevented by a safety clip which has to be removed before activation.

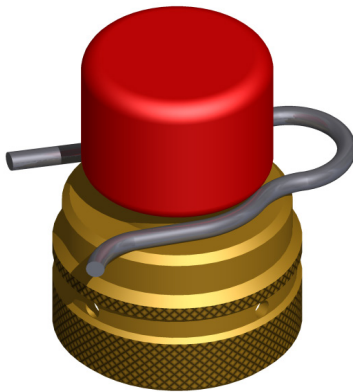


Figure 10 - Manual Actuator (Part No. 304.209.002)

Pneumatic Actuator

The pneumatic actuator is used to pneumatically operate the system at the container position and is fitted to the top of the valve assembly or removable electrical actuator. Pressure from a 'master' container is used to actuate the valve, via small bore piping or a flexible hose.

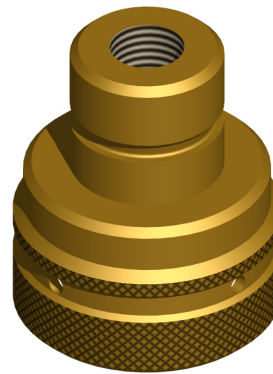


Figure 11 - Pneumatic Actuator (Part No. 304.209.004)

Technical Information

Body:	Brass CZ 121
Knob:	PVC (Colour: Red)
Safety Pin:	Stainless Steel 303
Piston Rod:	Brass CZ 121
Min. Actuation Force:	25.5 N (5.73 lbf)
Overall Size:	52mm (L) x 41.5mm (Dia) (2.05 in. (L) x 1.63 in. (Dia))
Weight:	0.265 kg (0.584 lb)

Technical Information

Body:	Brass CZ121
Actuation Pin:	Stainless Steel
Piston Rod:	Brass CZ 121
Pipe connection:	1/4 in. NPT Female
Min. Actuation Pressure:	4 bar (58 psi)
Max. Working Pressure:	75 bar (58 psi)
Overall Size:	48mm (L) x 41.5mm (Dia) (1.89 in. (L) x 1.63 in. (Dia))
Weight:	0.228 kg (0.503 lb)