

Low Pressure Switch (Standard Open On Fall)

A low pressure warning switch is fitted to every container and must be ordered separately. The device continuously monitors the container pressure and in the event of the pressure dropping below 20 bar (290 psi) the switch operates to enable the condition to be signalled to a control unit.

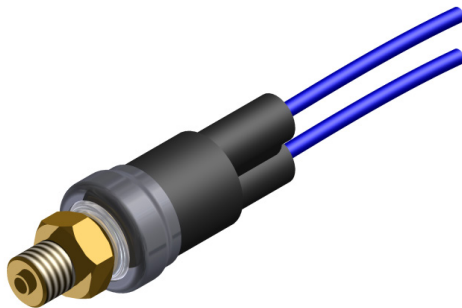
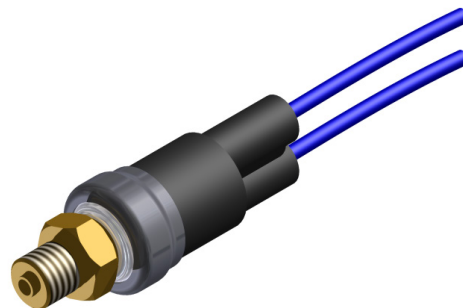


Figure 5 - Low Pressure Switch (Part No. 304.205.006)

Low Pressure Switch (Special Close On Fall)

A low pressure warning switch is fitted to every container and must be ordered separately. The device continuously monitors the container pressure and in the event of the pressure dropping below 20 bar (290 psi) the switch operates to enable the condition to be signalled to a control unit.



025086

Figure 6 - Low Pressure Switch (Part No. 305.209.005)

Technical Information

Body:	Hermetically sealed Stainless Steel
Switch Type:	Normally Open at Atmospheric Pressure
Switch Point:	Open on Fall at 20 bar (290 psi) Close on Rise at 24.1 bar (350 psi)
Tolerance:	+/-0.7 bar (\pm 10 psi)
Proof Pressure:	345 bar (5003 psi)
Electrical Housing:	Epoxy Sealed terminals
Connection:	Brass 1/8 in. NPT
Max. Current:	Max 2.9 A
Voltage Range:	5-28 v dc
Electrical Connection:	0.9m (3ft) x 2 Core Cable
Certification:	UL Recognised
IP Rating:	IP65
Wire Leads:	1.82 m (6 ft)
Overall Size:	38mm (L) x 16mm (Dia) (1.50 in. (L) x 0.63 in. (Dia))
Weight:	0.087 kg (0.192 lb)

Technical Information

Body:	Hermetically sealed Stainless Steel
Switch Type:	Normally Closed at Atmospheric Pressure
Switch Point:	Close on Fall at 20 bar (290 psi) Open on Rise at 24.1 bar (350 psi)
Tolerance:	+/-0.7 bar (\pm 10 psi)
Proof Pressure:	345 bar (5003 psi)
Electrical Housing:	Epoxy Sealed terminals
Connection:	Brass 1/8 in. NPT
Max. Current:	Max 2.9 A
Voltage Range:	5-28 v dc
Electrical Connection:	0.9m (3ft) x 2 Core Cable
Certification:	UL Recognised
IP Rating:	IP65
Wire Leads:	1.82 m (6 ft)
Overall Size:	38mm (L) x 16mm (Dia) (1.50 in. (L) x 0.63 in. (Dia))
Weight:	0.087 kg (0.192 lb)

SECTION 2 - SYSTEM COMPONENTS**Low Pressure Switch****(Alternate - Transfer On Fall - Option #1)**

A low pressure warning switch is fitted to every container and must be ordered separately. The device continuously monitors the container pressure and in the event of the pressure dropping below 20.3 bar (294 psi) the switch operates to enable the condition to be signalled to a control unit.

This low pressure switch is the primary supply, (option #1), of a dual source component used in order to maintain the supply chain and ensure that adequate stock levels are available to fully support customers and installers.

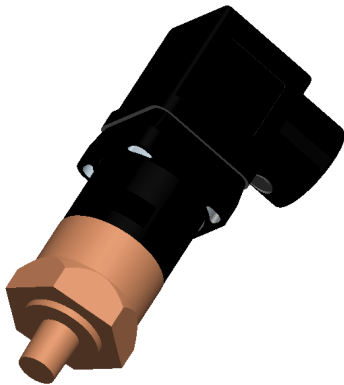


Figure 7 - Alternate Low Pressure Switch (Part No. 305.209.007)
Option #1

Technical Information

Body:	Zinc Plated Steel and Kapton
Switch Type:	Single Pole, Double Throw (SPDT)
Switch Point:	Transfers on Fall at 20.3 bar (294 psi) Resets on Rise at 24.1 bar (350 psi)
Tolerance:	+/-0.7 bar (± 10 psi)
Proof Pressure:	206.8 bar (3000 psi)
Contact Reset Method:	Auto Resetting Contacts
Connection:	1/8 in. NPT Male
Electrical Rating:	5 A at 24 v dc (Resistive)
Electrical Connection:	DIN 43650A Connector with 1/2 in. NPT Female Conduit Connection
Pin 1:	Common at Atmospheric Pressure
Pin 2:	Normally Closed at Atmospheric Pressure
Pin 3:	Normally Open at Atmospheric Pressure
Certification:	UL Recognised
IP Rating:	IP65
Overall Size:	104mm (L) x 28mm (Dia) (4.10 in. (L) x 1.12 in. (Dia))
Weight:	0.16 kg (0.35 lb)

Low Pressure Switch**(Alternate - Transfer On Fall - Option #2)**

A low pressure warning switch is fitted to every container and must be ordered separately. The device continuously monitors the container pressure and in the event of the pressure dropping below 20 bar (290 psi) the switch operates to enable the condition to be signalled to a control unit.

This low pressure switch is the secondary supply, (option #2), of a dual source component used in order to maintain the supply chain and ensure that adequate stock levels are available to fully support customers and installers.

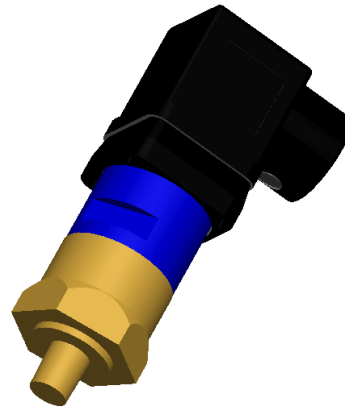


Figure 8 - Alternate Low Pressure Switch (Part No. 305.209.007)
Option #2

Technical Information

Body:	Brass and Anodised Aluminium
Switch Type:	Single Pole, Double Throw (SPDT)
Switch Point:	Transfers on Fall at 20 bar (290 psi) Resets on Rise at 22.8 bar (330 psi)
Tolerance:	+/-1.0 bar (± 15 psi)
Proof Pressure:	413.7 bar (6000 psi)
Contact Reset Method:	Auto Resetting Contacts
Connection:	1/8 in. NPT Male
Electrical Rating:	5 A at 24 v dc (Resistive)
Electrical Connection:	DIN 43650A Connector with 1/2 in. NPT Female Conduit Connection
Pin 1:	Common at Atmospheric Pressure
Pin 2:	Normally Closed at Atmospheric Pressure
Pin 3:	Normally Open at Atmospheric Pressure
Certification:	UL Recognised
IP Rating:	IP65
Overall Size:	104mm (L) x 32mm (Dia) (4.40 in. (L) x 1.25 in. (Dia))
Weight:	0.21 kg (0.46 lb)